

## MW200 Slip Rings

MW200 slip rings, Special designed for 20A, 30A current applications, specially used on Crane, Engineering machinery and quality needed in demanding environments. Costly downtime is eliminated by using fiber brushes and robust mechanical components in the slip ring design.

IP65 protection grade

Water proof

Multiple circuits \* large current is available.



### PARTS

PART #	CURRENT	TOTAL WIRES					
MW200-P1230	12 wires*30A	12					
MW200-P1630	16 wires*30A	16					
MW200-P1830	18 wires*30A	18					
MW200-P2430	24 wires*30A	24					

### Specifications

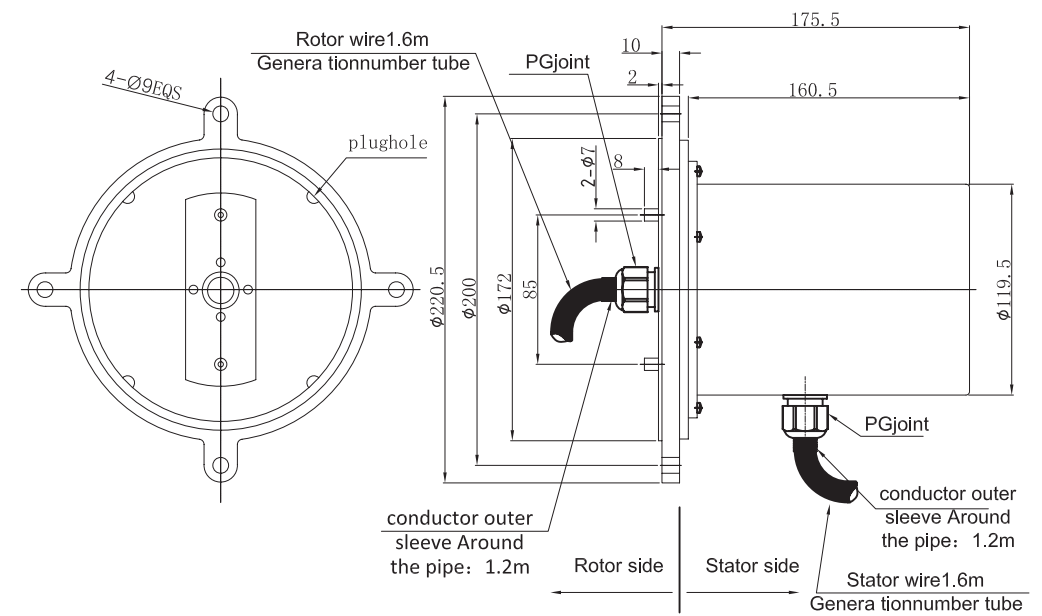
Rings	1-24(see table as above)	Current	30A each
Voltage	600 VDC/VAC	Max speed	150RPM
Housing Material	Aluminium Alloy	Torque	5N.m
Working life	depends on working speed	Contact Material	Precious Metal
Dielectric strength	1000VDC@50Hz	Lead Wire	UL Teflon®
Insulation resistance	1000MΩ@600VDC	Lead Lengths	1mm(on request)
Operating Temp.	-40°C to 80°C	Protection	IP65
Mechanical vibration	MIL-SID-810E	Humidity	10% to 90% RH
Materials	Lead Free, RoHS compliant	CE Certified	YES

Notes:

1) The operational life of the unit is dependent upon rotational speed, environment and temperature.

2) Electrical noise is dependent upon the rotating speed and current, voltage.

### Drawings



12 wires for one group color. from 13 ... 24, repeat the same color as 1 ... 12, indicated with number code pipe.

### Lead wire Color codes

Rings#	Color Code	Rings#	Color Code	Rings#	Color Code
1	BLK	5	YEL	9	GRY
2	BRN	6	GRN	10	WHT
3	RED	7	BLU	11	PINK
4	ORN	8	PURPLE	12	AZURY

## MW250 Slip Rings

MW250 slip rings, Specail designed for 20A,30A current applications, specially used on Crane,Engineering machinery and quality needed in demanding environments. Costly downtime is eliminated by using fiber brushes and robust mechanical components in the slip ring design.



IP65 protection grade

Water proof

Multiple circuits \* large current is available.

### Parts

PART #	CURRENT	TOTAL WIRES	LENGTH				
MW250-P1230	12 wires*30A	12	86				
MW250-P1630	16 wires*30A	16	101				
MW250-P1830	18 wires*30A	18	110				
MW250-P2430	24 wires*30A	24	136				

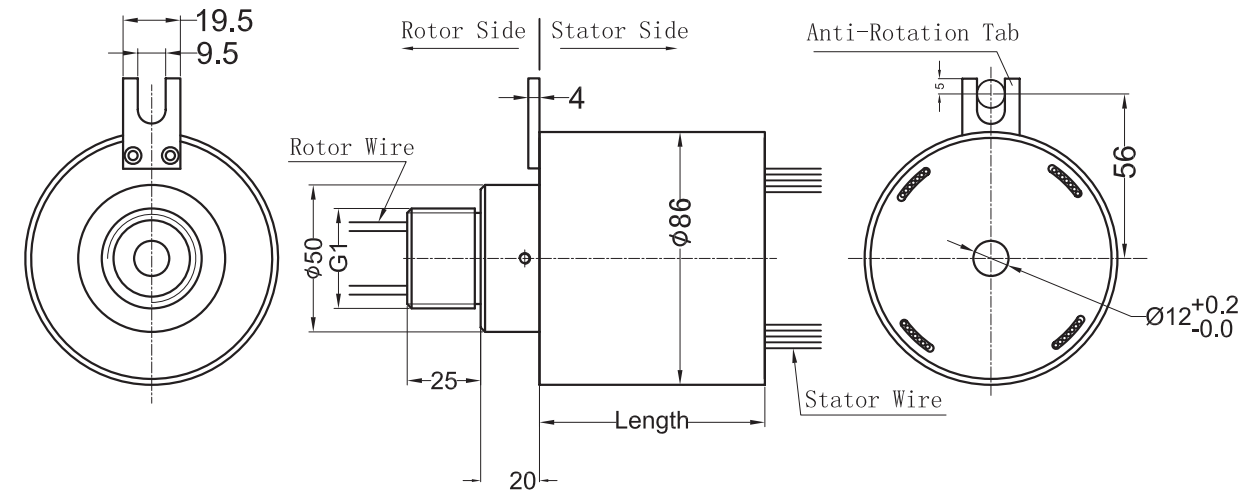
### Specifications

Rings	1-24(see table as above)	Current	30A each
Voltage	600 VDC/VAC	Max speed	150RPM
Housing Material	Aluminium Alloy	Torque	5N.m
Working life	depends on working speed	Contact Material	Precious Metal
Dielectric strength	1000VDC@50Hz	Lead Wire	UL Teflon®
Insulation resistance	1000MΩ@600VDC	Lead Lengths	1mm(on request)
Operating Temp.	-40°C to 80°C	Protection	IP65
Mechanical vibration	MIL-SID-810E	Humidity	10% to 90% RH
Materials	Lead Free,RoHS compliant	CE Certified	YES

Notes:

- 1)The operational life of the unit is dependent upon rotational speed, environment and temperature.
- 2)Electrical noise is dependent upon the rotating speed and current,voltage.

### Drawings



12 wires for one group color. from 13 ... 24, repeat the same color as 1 ... 12,indicated with number code pipe.

### Lead wire Color codes

Rings#	Color Code	Rings#	Color Code	Rings#	Color Code
1	BLK	5	YEL	9	GRY
2	BRN	6	GRN	10	WHT
3	RED	7	BLU	11	PINK
4	ORN	8	PURPLE	12	AZURY