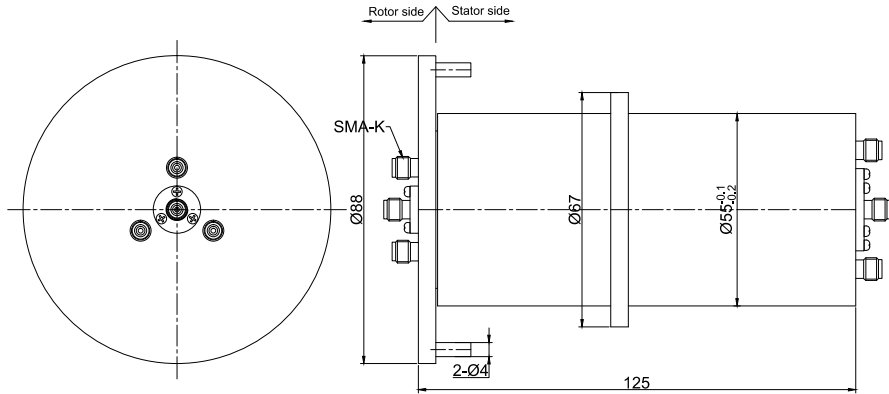
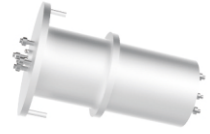


MHF400 Series

4 Channels RF Rotary Joints

MHF400 is 4 channels high frequency rotary joint, which is specifically designed for high-speed serial digital signals or analog signal transmission. It can support maximum transfer rate 2.5GHz. MHF series can support single channel or high-frequency signal transmission by itself. Also MHF series can be customized to combine high-frequency signal with 24V control signal, communication signal, power supply and fluid media.



Part# Explanation

MHF400- SMA - 2.5G

- MHF: High frequency slip ring
- 400: 4 channels RF
- SMA: SMA connector;
- 2.5G: Max frequency 2.5GHZ

Part# List

MHF400 - 4 channels RF rotary joint part list			
Part#	RF Channel	Frquency	Connector type
MHF400-SMA-2.5G	4	2.5GHz/Channel	SMA

Specifications

(RF Rotary joints) Specifications				
Parameter	1st Channel	2nd Channel	3rd Channel	4th Channel
Insertion Loss	<0.5	<0.5	<0.5	<0.5
Insertion Loss Ripple	<0.05	<0.05	<0.05	<0.05
VSWR	<1.3	<1.3	<1.3	<1.3
VSWR Ripple	<0.05	<0.05	<0.05	<0.05
Average Power	50W	15W	15W	15W
Mechanical Data				
Parameter	Value			
Working Life	50 million revs			
Rotating Speed	100RPM			
Working Temperature	-30°C~80°C			
Operating Humidity	0~85% RH			
Contact Material	Gold-Gold			
Housing Material	stainless steel			
Torque	0.1N.m ; +0.03N.m/6 rings			
Protection Grade	IP51			