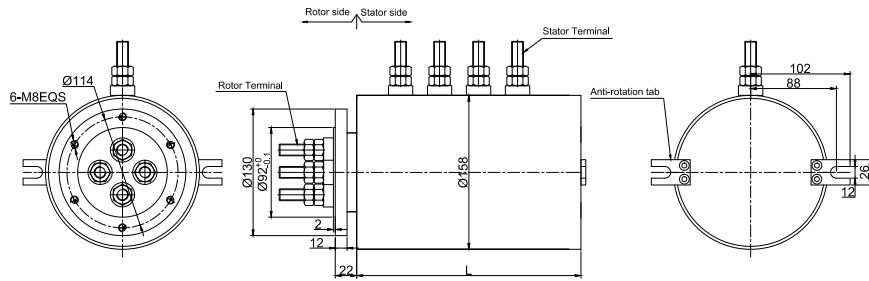
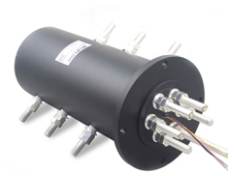


# MW5158 Series Slip Rings

MW5158 is super large current slip ring, and the rotor and stator separately adopt terminal connection, which is often used in application over 100A. According to the customer's request, it can be customized to add sensor signal or thermocouple signal. Our products adopt material imported from America. It has advantages of low contact resistance, slow temperature increase, which can meet the reliability requirements of military level.



## Part# Explanation

### MW 5158 - P02100

MW:large current series slip ring

5 : exit with terminals

158: outer diameter 158mm, mainly for the 2 rings ,3rings and 4 rings

P02100 : P-Power ring; 02-2 rings;100-100A/ring

## Part# List

MW5158 Series ( Terminals ) power slip ring part# list							
Part#	50A	100A	150A	200A	300A	500A	Length ( mm )
MW5158-P01200	0	0	0	1	0	0	96
MW5158-P01300	0	0	0	0	1	0	96
MW5158-P01500	0	0	0	0	0	1	96
MW5158-P02200	0	0	0	2	0	0	170
MW5158-P02300	0	0	0	0	2	0	170
MW5158-P02500	0	0	0	0	0	2	210
MW5158-P03200	0	0	0	3	0	0	220
MW5158-P03300	0	0	0	0	3	0	220
MW5158-P03500	0	0	0	0	0	3	280
MW5158-P04200	0	0	0	4	0	0	270
MW5158-P04300	0	0	0	0	4	0	270
MW5159-P04500	0	0	0	0	0	4	350

Note: 1. N channels 50A rings parallel can be used as 1 channel N \* 50A current. For example: 2 rings 50A parallel could be used as 1 wires 100A

2. According to the customer's request, it can be customized to pass high current 1000A to 7500A. Please contact customer service for more details.

Specification

Electrical Data		
Parameter	Value	
	Power	Signal
Rated Voltage	0~690VAC/VDC	0~440VAC/VDC
Insulation Resistance	≥1000MΩ/500VDC	≥1000MΩ/500VDC
Lead Wires	terminal	terminal
Lead Length	Standard 300mm	
Dielectric Strength	500VAC@50Hz , 60s	
Electrical Noise	<0.01Ω	
Mechanical Data		
Parameter	Value	
Working Life	20 Million revs	
Rotating Speed	250RPM	
Working Temperature	-30°C~80°C	
Operating Humidity	0~85% RH	
Contact Material	Gold-plated	
Housing Materia	aluminium alloy	
Torque	0.1N.m ; +0.03N.m/6rings	
Protection Grade	IP51	

Options for custom slip ring

Note: Below special demands can be customized. According, the delivery date will be extended 3 to 15 days; also the cost will be increased 30% to 50%. Most of our basic parts are standard and modular, which can save the cost and lead time.

- ① Cable exit way and cable length can be customized for both rotor and stator.
- ② Because of the structure limitation, length/height/OD can be customized on your request.
- ③ Support current or signal up to 200 rings.
- ④ Aviation plug, terminal and heat-shrink tube are optional.
- ⑤ Hybrid slip ring for Yaskawa/Panasonic/Siemens servo control signal, power line and encoder line.
- ⑥ Support mixed high speed data transmission (including Ethernet, USB, RS232, RS485, Profibus, CanBUS, CANOPEN, DeviceNET, CC-LINK, ProfiNET, EtherCAT, etc.)
- ⑦ Can combine temperature control signal with thermocouple signal.
- ⑧ Special environment can be customized, such as quakeproof, high temperature, etc.
- ⑨ Hybrid Pneumatic/hydraulic and electric slip ring can be mixed.
- ⑩ High temperature can up to 500 degrees.
- ⑪ High pressure can up to 110KV
- ⑫ Rotating speed can up to 10000RPM
- ⑬ Maximum current can up to 5000 amperes.
- ⑭ Military grade
- ⑮ Optional for underwater IP65, IP68.
- ⑯ Optional for stainless steel housing

Technical support: [technical@moflon.com](mailto:technical@moflon.com)