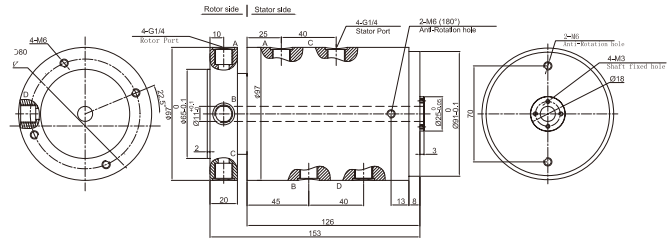


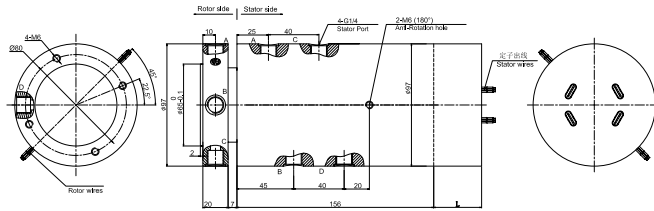
4 passages, G1/4



MAPH400F-03 Dimensions



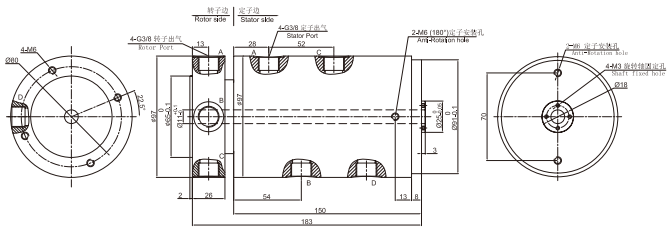
MAPH400F-03 Integration of gas and electricity Dimensions ▼



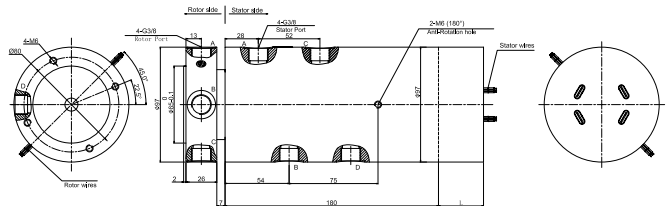
4 passages, G3/8



MAPH400F-04 Dimensions



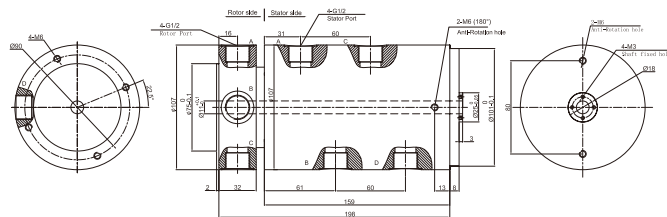
MAPH400F-04 Integration of gas and electricity Dimensions ▼



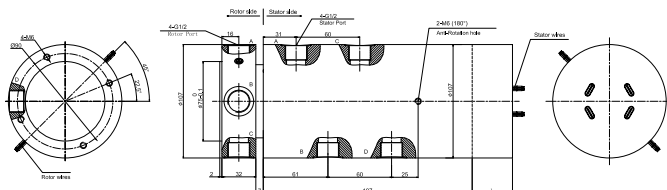
4 passages, G1/2



MAPH400F-05 Dimensions



MAPH400F-05 Integration of gas and electricity Dimensions ▼



Specifications

| Rotary Union Specification | | |
|----------------------------|---------------------------------|----------------|
| Parameter | Value | |
| Passage | 4 passages | |
| Max .Pressure | 3MPa, Vacuum 100KPa | |
| Torque | depend on conection size | |
| Electrical Data | | |
| Parameter | Value | |
| | Power | Signal |
| Rated Voltage | 0~440VAC/VDC | 0~440VAC/VDC |
| Insulation Resistance | ≥1000MΩ/500VDC | ≥1000MΩ/500VDC |
| Lead Wires | AWG17#Teflon | AWG22#Teflon |
| Lead Length | standard 300mm(adjustable) | |
| Insulation Strength | 500VAC@50Hz, 60s | |
| Electrical Noise | <0.01Ω | |
| Mechanical Data | | |
| Parameter | Value | |
| Working Life | See Product Quality Level Table | |
| Rotating Speed | See Product Quality Level Table | |
| Working Temperature | -30°C~80°C | |
| Operating Humidity | 0~85% RH | |
| Contact Material | Precious Metal | |
| Housing Material | Aluminium Alloy | |
| Protection Grade | IP51 | |

Part# List

| MAPH400F-XX Pneumatic/Hydraulic Slip Ring | | | | | | | | | |
|---|-----------------------------|-----|--------------|-------------|-----------------------|-----------------------------|-----|--------------|-------------|
| 1) XX=01,connection size=M5" Pipe size3~6mm 2) XX=02connection size=G1/8" Pipe size3~10mm | | | | | | | | | |
| 3) XX=03,connection size=G1/4" Pipe size3~12mm 4) XX=04,connection size=G3/8" Pipe size3~16mm | | | | | | | | | |
| 5) XX=05,connection size=G1/2" Pipe size3~20mm | | | | | | | | | |
| Part# | Pneumatic/Hydraulic Passage | 10A | Signal or 5A | Length (mm) | Part# | Pneumatic/Hydraulic Passage | 10A | Signal or 5A | Length (mm) |
| MAPH400F-XX-S06 | 4 passages | 0 | 6 | 38 | MAPH400F-XX-P1210-S06 | 4 passages | 12 | 6 | 71.6 |
| MAPH400F-XX-P0210-S04 | 4 passages | 2 | 4 | 38 | MAPH400F-XX-P1410-S04 | 4 passages | 14 | 4 | 71.6 |
| MAPH400F-XX-P0410-S02 | 4 passages | 4 | 2 | 38 | MAPH400F-XX-P1610-S02 | 4 passages | 16 | 2 | 71.6 |
| MAPH400F-XX-P0610 | 4 passages | 6 | 0 | 38 | MAPH400F-XX-S24 | 4 passages | 0 | 24 | 88.4 |
| MAPH400F-XX-S12 | 4 passages | 12 | 0 | 54.8 | MAPH400F-XX-P0410-S20 | 4 passages | 4 | 20 | 88.4 |
| MAPH400F-XX-P0210-S10 | 4 passages | 2 | 10 | 54.8 | MAPH400F-XX-P0610-S18 | 4 passages | 6 | 18 | 88.4 |
| MAPH400F-XX-P0310-S09 | 4 passages | 3 | 9 | 54.8 | MAPH400F-XX-P1210-S12 | 4 passages | 12 | 12 | 88.4 |
| MAPH400F-XX-P0610-S06 | 4 passages | 6 | 6 | 54.8 | MAPH400F-XX-S30 | 4 passages | 0 | 30 | 105.2 |
| MAPH400F-XX-P0810-S04 | 4 passages | 8 | 4 | 54.8 | MAPH400F-XX-P0610-S24 | 4 passages | 6 | 24 | 105.2 |
| MAPH400F-XX-P1010-S02 | 4 passages | 10 | 2 | 54.8 | MAPH400F-XX-S36 | 4 passages | 0 | 36 | 125 |
| MAPH400F-XX-P1210 | 4 passages | 12 | 0 | 54.8 | MAPH400F-XX-S42 | 4 passages | 0 | 42 | 141.8 |
| MAPH400F-XX-S18 | 4 passages | 0 | 18 | 71.6 | MAPH400F-XX-S48 | 4 passages | 0 | 48 | 158.6 |
| MAPH400F-XX-P0210-S16 | 4 passages | 2 | 16 | 71.6 | | | | | |
| MAPH400F-XX-P0410-S14 | 4 passages | 4 | 14 | 71.6 | | | | | |
| MAPH400F-XX-P0610-S12 | 4 passages | 6 | 12 | 71.6 | | | | | |
| MAPH400F-XX-P0810-S10 | 4 passages | 8 | 10 | 71.6 | | | | | |
| MAPH400F-XX-P1010-S08 | 4 passages | 10 | 8 | 71.6 | | | | | |

Note:N channels 10A rings parallel can be used as 1 channel N*10A current. For example: 2 rings 10A parallel could be used as 1 wires 20A. 10A and Signal(5A) can be combine in any way as you need.Max.ring:96 rings,can be customized based on standard slip rings.Please contact us.

Product Quality Level Table

| Products Level Code | Max Rotating Speed | Working Life | Sealing Element |
|---------------------|--------------------|-----------------|--------------------|
| VC | 100RPM | 10 Million Revs | Common Seals |
| VD | 300RPM | 30 Million Revs | High-Quality Seals |

Lead Wires Color Code

| Ring | 1 | 2 | 3 | 4 | 5 | 6 | 7 | 8 | 9 | 10 | 11 | 12 |
|-------|-----|-----|-----|-----|-----|-----|-----|-----|-----|-----|-----|-----|
| Color | BLK | RED | YLW | GRN | BLU | WHT | BLK | RED | YLW | GRN | BLU | WHT |

(6 wires for 1 group color, from 7-12, repeat the same color as 1...6, indicated with number code pipe)

Options for custom slip ring

Note: Below special demands can be customized. According, the delivery date will be extended 3 to 15 days; also the cost will be increased 30% to 50%. Most of our basic parts are standard and modular, which can save the cost and lead time.

- ① Cable exit way and cable length can be customized for both rotor and stator.
- ② Because of the structure limitation, length/height/OD can be customized on your request.
- ③ Support current or signal up to 200 rings.
- ④ Aviation plug, terminal and heat-shrink tube are optional.
- ⑤ Hybrid slip ring for Yaskawa/Panasonic/Siemens servo control signal, power line and encoder line.
- ⑥ Support mixed high speed data transmission (including Ethernet, USB, RS232, RS485, Profibus, CanBUS, CANOPEN, DeviceNET, CC-LINK, ProfiNET, EtherCAT, etc.)
- ⑦ Can combine temperature control signal with thermocouple signal.
- ⑧ Special environment can be customized, such as quakeproof, high temperature, etc.
- ⑨ Hybrid Pneumatic/hydraulic and electric slip ring can be mixed.
- ⑩ High temperature can up to 500 degrees.
- ⑪ High pressure can up to 110KV
- ⑫ Rotating speed can up to 10000RPM
- ⑬ Maximum current can up to 5000 amperes.
- ⑭ Military grade
- ⑮ Optional for underwater IP65, IP68.
- ⑯ Optional for stainless steel housing

Technical support: technical@moflon.com