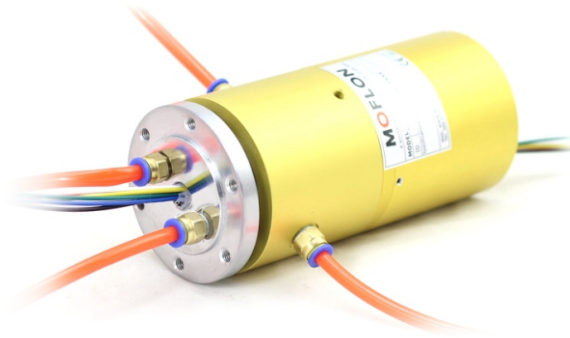
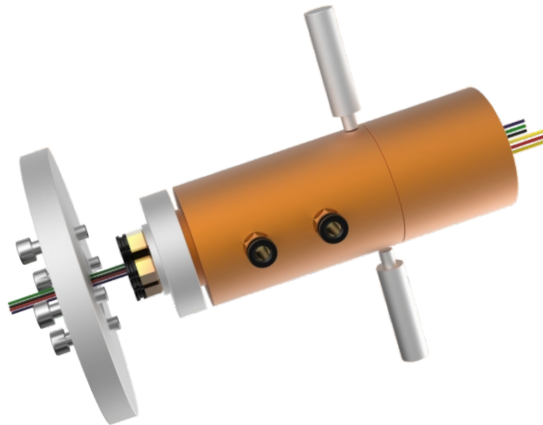


Install instruction -Pneumatic hybrid style

Pneumatic hydraulic hybrid slip ring is a 360°rotary electric device,especial in industrial application



Installation diagram (3D) :



Installation guide:

- 1) Installation site should match with the position of flange,if not,then add transitional flange
- 2) The installation hole of flange has teeth.
- 3) Adding spring shim to avoid screw loose in the vibrate area
- 4) Flange has a boss ,used to located coaxiality ,
- 5) There are 2 anti-rotary holes on the slip ring,anti-rotary pole twists into hole and should be keep a certain freedom while connected with stator part,otherwise ,slip ring would be damaged easily.Normally ,cover the slip ring with torus and connect anti-rotary pole.

Notes:

- ① Protecting the leads to avoid wire insulation damaged and affect the product quality when installing.
- ② slip ring is a precision electrical components,it should works in a dry,less dust environment. It must add some protection if working in strict condition.
- ③ Ensure the screw is tight
- ④ Stator leads keep away from axis and rotor leads away from fix part to avoid scratching wires.
- ⑤ Stator and rotor can be exchange according to request.