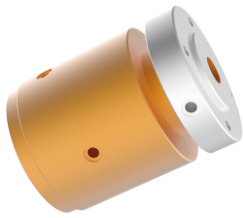


MQ200F Series (2 Port In 2 Port Out Fluid Rotary Unions)



MQ200F Pneumatic/Hydraulic rotary joints, optional size for M5,G1/8, G1/4,G3/8,G1/2,it can be customized for larger port,for example G1", G2", medias: compressed air,vacuum,hydrogen,nitrogen,Chemical mixed gas,steam,cooling water,hot water,hot oil,petroleum,vitriol,drink.etc.

Part# Explanation

MQ 200F - 02 - VC

Products quality level
 VC common quality version
 VD industrial quality version
 Default =VC version

MQ: Pneumatic/Hydraulic rotary joints(slip ring)

200 : 2 ports in 2 ports out

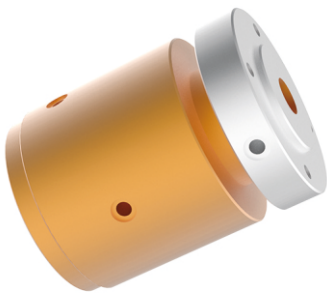
F : port exit from the side of flange

02 : port size;

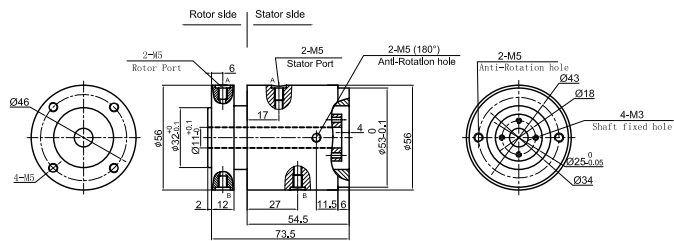
01=M5 , 02=G1/8" , 03=G1/4 " , 04=G3/8",

05=G1/2"

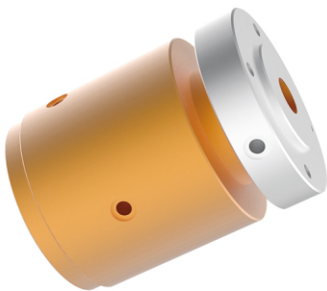
M5 Port



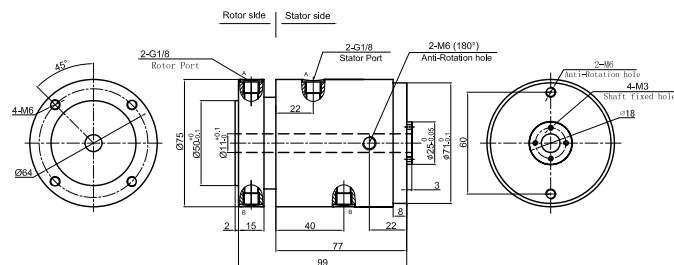
MQ200F-01 Dimensions



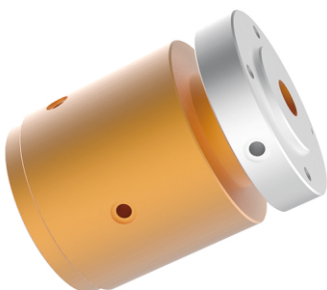
G1/8 Port



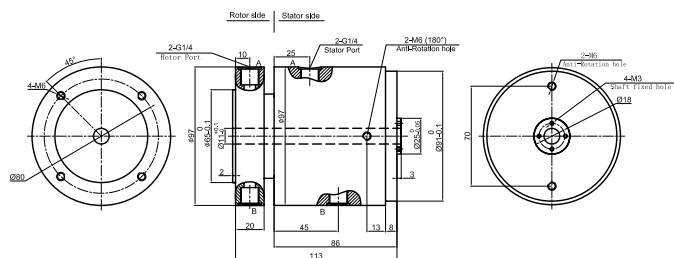
MQ200F-02 Dimensions

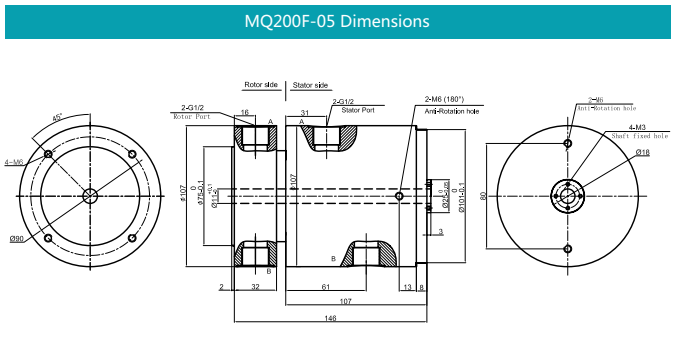
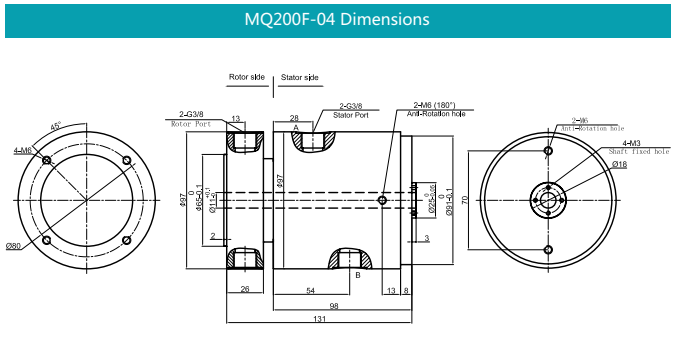


G1/4 Port



MQ200F-03 Dimensions





Part# list

MQ200 series Pneumatic/Hydraulic rotary joints part list							
Part#	Pneumatic/Hydraulic passages	Max torque (N.M)	Port size	Part#	Pneumatic/Hydraulic passages	Max torque (N.M)	Port size
MQ200F-01	2 in 2 out	0.6	M5	MQ200F-04	2 in 2 out	3	G3/8 "
MQ200F-02	2 in 2 out	1.6	G1/8 "	MQ200F-05	2 in 2 out	3.5	G1/2 "
MQ200F-03	2 in 2 out	2.4	G1/4 "				

Specifications

Mechanical Data		Rotary Joints Technique Data	
Parameter	Value	Parameter	Value
Working Life	See product quality level table	Passages	2 ports in 2 ports out
Rotating Speed	See product quality level table	Max Pressure	10MPa (can be customized) , vacuum 0.01torr
Working Temperature	-30°C~80°C	Media	Air,vacuum,hydraulic oil,water,hot water,cooling water,steam etc
Operating Humidity	0~85% RH	Torque	See part list above
Sealing Element	See product quality level table		
Housing Materials	aluminium alloy/stainless steel		
Protection Grade	IP51		

Product Quality Level Table

Products Level Code	Max Rotating Speed	Working Life	Sealing Element
VC	100RPM	6 millions revs	Common Sealing Element
VD	300RPM	20 millions revs	High-Quality Sealing Element

Options for custom slip ring

Notes:it can be customized as below requirements,lead time would increase 3~15 days,price would increase 5%~50%.Most basic parts of slip ring are standard and modularized,which saved costs and lead time.

- 1 Port size
 - 2 Pressure
 - 3 Rotating speed
 - 4 Through bore size
 - 5 Corrosive media,all stainless steel,anti-explosion,high temp etc.
 - 6 Can combine with electrical slip ring
- Technical support: Technical@moflon.com