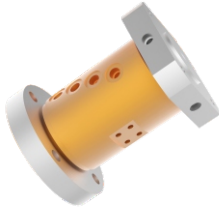


MQ400W Series (Double Flange Rotor 4 Port In 4 Ports Out Fluid Rotary Unions)



MQ400W Pneumatic/Hydraulic rotary joints, optional size for M5,G1/8, G1/4,G3/8,G1/2,it can be customized for larger port,for example G1", G2", medias: compressed air,vacuum,hydrogen,nitrogen,Chemical mixed gas,steam,cooling water,hot water,hot oil,petroleum,vitriol,drink.etc.

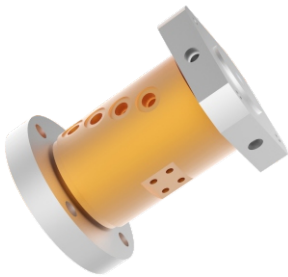
Part# Explanation

MQ 400W - 02 - VC

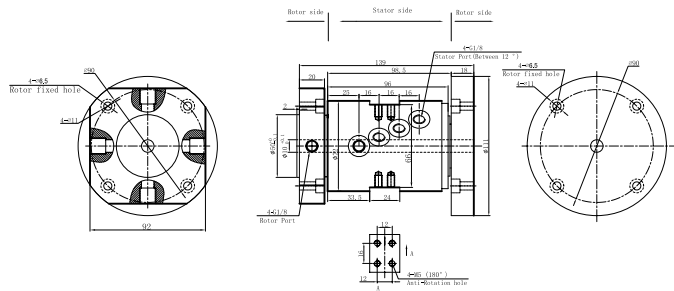
MQ: Pneumatic/Hydraulic rotary joints(slip ring)
 400 : 4 ports in 4 ports out
 W : double flange rotor,100Kg load at axial direction
 02 : port size;
 01=M5 , 02=G1/8" , 03=G1/4 " , 04=G3/8" ,
 05=G1/2"

Products quality level
 VC common quality version
 VD industrial quality version
 Default =VC version

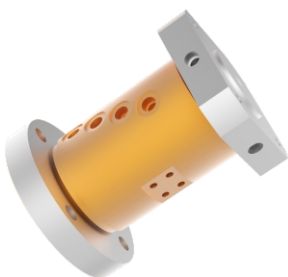
G1/8 Port



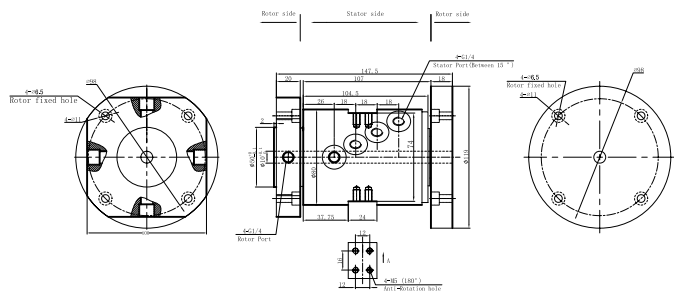
MQ400W-02 Dimensions



G1/4 Port



MQ400W-03 Dimensions



Part# list

MQ400W series Pneumatic/Hydraulic rotary joints part list			
Part#	Pneumatic/Hydraulic passages	Max torque(N.M)	Port size
MQ400W-01	4 in 4 out	1.8	M5
MQ400W-02	4 in 4 out	3.2	G1/8 "
MQ400W-03	4 in 4 out	4.0	G1/4 "
MQ400W-04	4 in 4 out	4.6	G3/8 "
MQ400W-05	4 in 4 out	6.1	G1/2 "

Specifications

Rotary joints Technique Data	
Parameter	Value
Passages	4 ports in 4 ports out
Max Pressure	10MPa (can be customized) , vacuum 0.01torr
Media	Air,vacuum,hydraulic oil , water,hot water,cooling water,steam etc.
Torque	See part list above
Mechanical Data	
Parameter	Value
Working Life	See product quality level table
Rotating Speed	See product quality level table
Working Temperature	-30°C~80°C
Operating Humidity	0~85% RH
Sealing Element	See product quality level table
Housing Materials	aluminium alloy/stainless steel
Protection Grade	IP51

Product Quality Level Table

Products Level Code	Max Rotating Speed	Working Life	Sealing Element
VC	100RPM	6 millions revs	Common Sealing Element
VD	300RPM	20 millions revs	High-Quality Sealing Element

Options for custom slip ring

Notes:it can be customized as below requirements,lead time would increase 3~15 days,price would increase 5%~50%.Most basic parts of slip ring are standard and modularized,which saved costs and lead time.

- 1 Port size
- 2 Pressure
- 3 Rotating speed
- 4 Through bore size
- 5 Corrosive media,all stainless steel,anti-explosion,high temp etc.
- 6 Can combine with electrical slip ring

Technical support: Technical@moflon.com