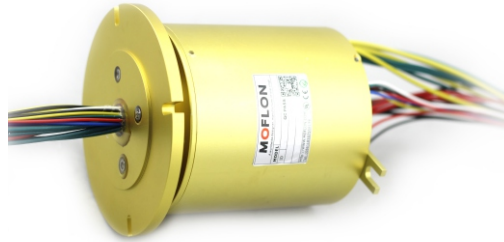
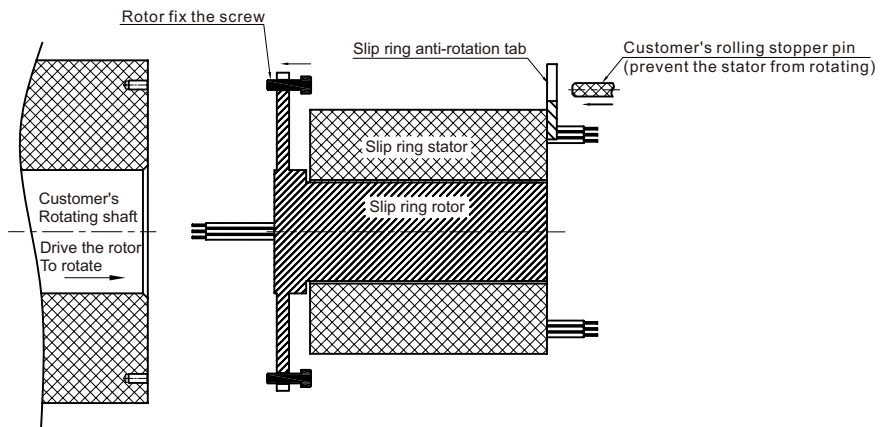


Installation with rotor flange slip ring

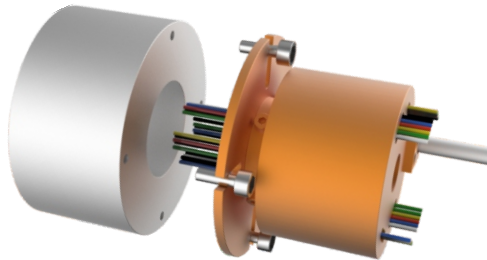
Rotor flange slip ring is the one with flange on rotor, picture as below:



Installation diagram (2D) :



Installation diagram (3D) :



Guide for installation:

We suggest fixing slip ring on the rotating shaft with 4 screws because it's hard to ensure concentricity of rotor and stator. please rotate slip ring and make sure it rotary fluently before tighten the screws. Inserting anti-rotor pole into anti-rotor pin ,do not fix anti-rotor pin forcibly,or it would affect life time of slip ring

Notes:

- ① Slip ring just can bear own weight,the leads also can't bear external pulling force.
- ② Protecting the leads to avoid wire insulation damaged and affect the product quality when installing.
- ③ Slip ring is a precision electrical components,it should works in a dry,less dust environment. It must add some protection if working in strict condition.
- ④ Ensure the screw is tight.
- ⑤ Stator leads keep away from axis and rotor leads away from fix part to avoid scratching wires.
- ⑥ Stator and rotor part can be exchange according to the demands.